

Catalogue No. 6410.5



**Price Index of Western Australian
Produced Hardwoods**

March Quarter 1995

Price Index of Western Australian Produced Hardwoods

March Quarter 1995

KEY FIGURES

	<i>Percentage change</i>	
	<i>Mar qtr 94 to Mar qtr 95</i>	<i>Dec qtr 94 to Mar qtr 95</i>
Price Index of Western Australian Produced Hardwoods	4.6	0.0
Price Index of Green Jarrah Produced	5.6	0.0
Price Index of Green Karri Produced	2.5	0.0
Price Index of Dry Jarrah Produced	4.8	-0.2

P.C. KELLY
Deputy Commonwealth Statistician
and Government Statistician

PHONE INQUIRIES for further information about these statistics, contact Mike Carter on Perth (09) 360 5128.

MAIL INQUIRIES write to Information Services, ABS, GPO Box K881, PERTH, W.A. 6001

INTRODUCTION

This publication, prepared by the Australian Bureau of Statistics on behalf of the Western Australian Department of Conservation and Land Management and the Forest Industries Federation (WA) Inc, presents index numbers measuring changes in prices of Western Australian sawn hardwood timber.

The Price Index of Western Australian Produced Hardwoods measures the change in prices of all Western Australian hardwoods. Individual price indexes have also been compiled for each of the major hardwood timbers produced and sold by the Western Australian timber industry. The major timbers are:

Green jarrah

Green karri

Dry jarrah

Dry karri

SUMMARY OF FINDINGS

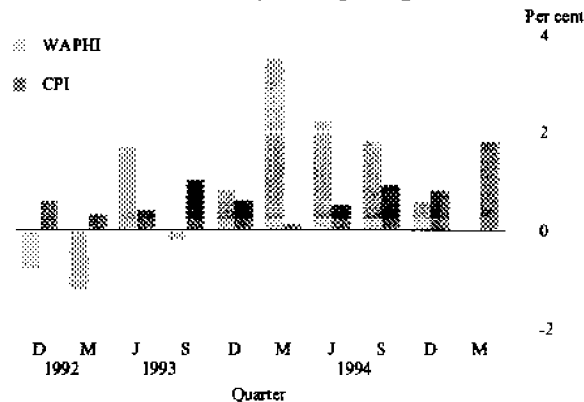
Price Index of Western Australian Produced Hardwoods (WAPHI)

There was no change in the WAPHI from the December quarter 1994 to the March quarter 1995, due mainly to the price increases during the March quarter 1995 offsetting the price decreases during the same period.

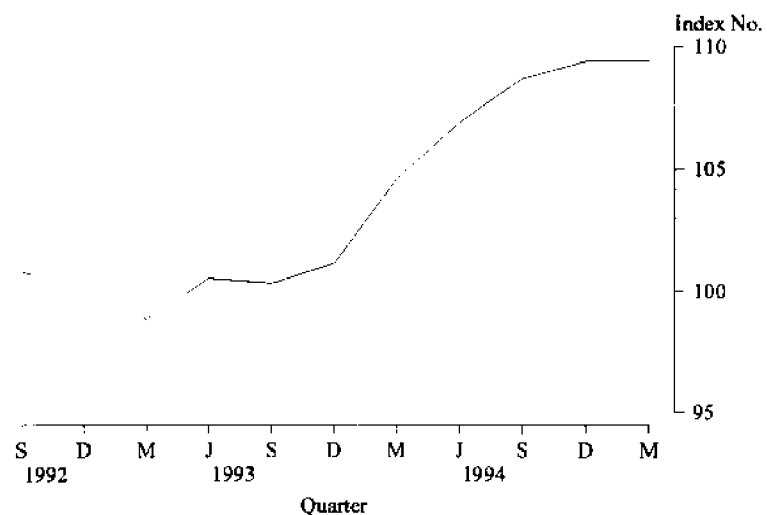
For the 12 months ending March 1995, WAPHI increased by 4.6 per cent compared with a 4.1 per cent increase in the Consumer Price Index (CPI), Perth, All Groups over the same period. WAPHI and CPI movements are not similar because of the different market forces affecting them.

The graphs below and Table 1 depict the quarterly index numbers and percentage changes for WAPHI. A resume of the factors affecting prices, and therefore the index numbers for individual timbers, is contained in the commentary on each of the timbers.

**PRICE INDEX OF WESTERN AUSTRALIAN PRODUCED HARDWOODS
AND CONSUMER PRICE INDEX, PERTH**
Quarterly Percentage Change



PRICE INDEX OF WESTERN AUSTRALIAN PRODUCED HARDWOODS
Base: 1992-93 = 100.0



Price Indexes of Green Jarrah Produced and Green Karri Produced

Although some minor price changes occurred during the March quarter 1995, the net effect of the changes in the price indexes for green jarrah and karri was no change from the December quarter 1994.

The major domestic demand for green jarrah and green karri is for structural timber for roofing in house construction in Perth. Consequently, movements in the prices for jarrah and karri timbers can be influenced by changes in the level of demand for new houses in the Perth Statistical Division.

The graph below shows the relationship of changes in the number of house commencements and movements in the prices of green jarrah and karri.

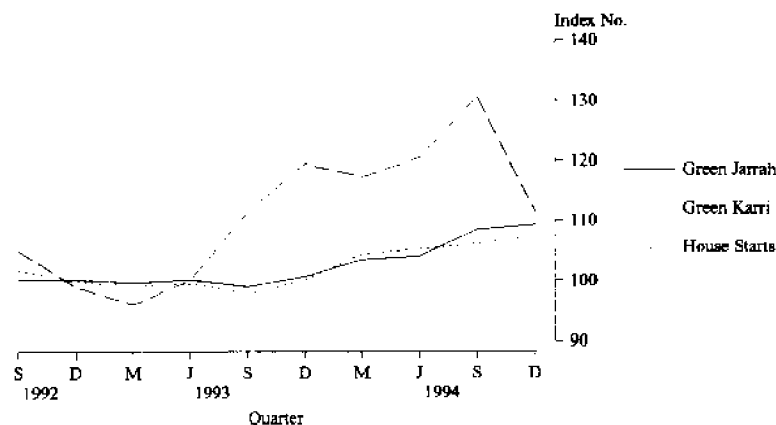
A resurgence in house commencements became evident in the December quarter 1993 and continued through to the September quarter 1994. During the December quarter 1994 house commencements showed a significant drop from the levels of preceding four quarters and Buildings Approvals data currently available indicate the decline will continue in the March quarter 1995.

Another significant domestic use of green timber is for railway sleepers and crossing timber.

Exports of green timber are mainly to Europe and include structural timber as well as sleepers and crossing timbers.

The graph below also illustrates the normally close price relationship between green jarrah and green karri. Generally, suppliers revise the prices of jarrah and karri to the local market at the same time, usually applying a uniform percentage price change to the same size, length and stress grade of hardwood timber, irrespective of variety. However, prices for interstate sales and exports of green jarrah and karri are independently determined and can affect the normally close correlation of price movements for jarrah and karri.

PRICE INDEXES OF GREEN JARRAH, GREEN KARRI AND HOUSE STARTS
Base of each index: 1992-93 = 100.0



Price Index of Dry Jarrah Produced

As with green jarrah and karri, there were minor changes in the prices for individual products in the March quarter 1995. However, the net effect of these changes was a nil movement in the index for dry jarrah.

There is a good domestic market for dry jarrah timber and significant quantities are also sold interstate or exported. The majority of sales of locally purchased timber are to the building industry as structural timber, to joiners and to the furniture industry for high quality furniture. Currently, sales of decking and flooring timber dominate the interstate and the relatively small, but developing, international market.

Price Index of Dry Karri Produced

By comparison with other timbers, the production of dry karri is quite small, and to date most of the output has been sold interstate. Suppliers are increasing their output and are seeking to develop interstate and overseas markets.

An index for dry karri has been compiled, but because of the limited sales to date, the ABS is unable to release the quarterly index.

Price movements for dry karri are, however, included in the compilation of the Price Index of Western Australian Produced Hardwoods.

**TABLE 1. PRICE INDEX OF WESTERN AUSTRALIAN PRODUCED
HARDWOODS**

	<i>Index numbers (a)</i>	<i>% change from previous period</i>	<i>% change from corresponding quarter of previous year</i>
1992-93	100.0
1993-94	103.3	3.3	..
Quarters			
1993-94			
September	100.3	-0.2	-0.5
December	101.1	0.8	1.1
March	104.6	3.5	5.9
June	106.9	2.2	6.4
1994-95			
September	108.8	1.8	8.5
December	109.4	0.6	8.2
March	109.4	0.0	4.6

(a) Base of index 1992-93 = 100

TABLE 2. PRICE INDEX OF GREEN JARRAH PRODUCED

	<i>Index numbers (a)</i>	<i>% change from previous period</i>	<i>% change from corresponding quarter of previous year</i>
1992-93	100.0
1993-94	101.8	1.8	..
Quarters			
1993-94			
September	99.0	-1.1	-1.2
December	100.7	1.7	0.6
March	103.5	2.8	3.9
June	104.1	0.6	4.0
1994-95			
September	108.5	4.2	9.6
December	109.3	0.7	8.5
March	109.3	0.0	5.6

(a) Base of index: 1992-93 = 100.0

TABLE 3. PRICE INDEX OF GREEN KARRI PRODUCED

	<i>Index numbers (a)</i>	<i>% change from previous period</i>	<i>% change from corresponding quarter of previous year</i>
1992-93	100.0
1993-94	101.9	1.9	..
Quarters			
1993-94			
September	97.8	-1.7	-3.8
December	100.1	2.4	0.3
March	104.4	4.3	5.3
June	105.3	0.9	5.8
1994-95			
September r	106.2	0.9	8.6
December r	107.0	0.8	6.9
March	107.0	0.0	2.5

a) Base of index: 1992-93 = 100.0

TABLE 4. PRICE INDEX OF WESTERN AUSTRALIAN PRODUCED HARDWOODS

	<i>Index numbers (a)</i>	<i>% change from previous period</i>	<i>% change from corresponding quarter of previous year</i>
1992-93	100.0
1993-94	105.8	5.8	..
Quarters			
1993-94			
September	103.9	2.0	3.5
December	102.4	-1.4	2.3
March	105.7	3.2	8.3
June	111.0	5.0	8.9
1994-95			
September	111.0	0.0	6.8
December	111.0	0.0	8.4
March	110.8	-0.2	4.8

(a) Base of index: 1992-93 = 100.0

EXPLANATORY NOTES

Introduction

This publication presents index numbers measuring changes in prices for sawn timber produced from Western Australian hardwoods. They are calculated on the reference base 1992-93 = 100.0.

Scope

The scope of the index is Western Australian produced hardwood timber sawn and sold by mills and merchants within Western Australia, interstate and overseas. Timber used for veneer, woodchips, particle board and poles is not included.

Items and weights

The indexes are fixed weights indexes. The items included in the index were selected and allocated value weights on the basis of sawn timber sold during 1992-93 to final users in Western Australia, interstate, or overseas.

Many of the selected items carry not only the weight of directly priced timbers, but also the weight of other timbers whose prices are considered to move similarly to those of the directly priced timbers.

PRICE INDEX OF WESTERN AUSTRALIAN PRODUCED HARDWOODS COMPOSITION AND WEIGHTING IN REFERENCE YEAR 1992-93

<i>Item</i>	<i>Percentage contribution</i>
Green jarrah	33.0
Green karri	33.0
Dry jarrah	30.0
Dry karri	4.0
Total	100.0

Price measurement

Most prices used in these indexes relate to the mid-point of the month. Prices are obtained from a representative sample of sawmillers and timber merchants. The point of pricing is the last sale before final use; handling and delivery costs are included for local sales, if incorporated in the merchant's or sawmiller's price. For example, the price of timber sold to builders is the delivered on site price. Interstate sales are normally priced ex-mill and for exports, the price is generally free on board (fob).

As far as possible, actual transaction prices are used in the indexes. These are the prices *actually* paid by builders, joinery workshops, furniture manufacturers and other purchasers of the timber. The actual price paid can be described in various ways. For example, a price for a sawmiller's or merchant's product may be described in terms of the components that make up the price, such as 'list price less (particular types of) discount'. It is these *net* prices that buyers pay to sellers that the ABS aims to use in compiling these price indexes.

Price series relate to goods of fixed specifications with the aim of incorporating in the index, price changes for representative articles of constant quality (eg. size, dimensions, stress grade). Consistent with this approach, prices in general relate to a standard representative set of transactions (in terms of quantity, delivery arrangements, destination, etc.) in order to avoid variations in price that are attributable solely to a changing mix of transactions over time.

Index Numbers

The index numbers for financial years are simple averages of the relevant quarterly index numbers.

Revisions

Index numbers for the current quarter and the previous quarter are preliminary and subject to revision. From time to time, index numbers for earlier periods may also be revised. This will occur whenever the ABS obtains more complete information or discovers that incorrect prices have been used.

Analysis of Index Changes

Care should be exercised when interpreting quarter-to-quarter movements in the indexes as short term movements do not necessarily indicate changes in trend.

Movements in indexes from one period to another can be expressed either as changes in 'index points' or as percentage changes. The following example illustrates the method of calculating index points changes and percentage changes between any two periods:

Price Index Of Western Australian Produced Hardwoods

March quarter 1995	109.4
March quarter 1994	104.6
Change in index points	4.8
Percentage change	$\frac{4.8}{104.6} \times 100 = 4.6\%$

Related Publications

Users may also wish to refer to the following publications which are available from ABS Bookshops:

- *Consumer Price Index, Eight Capital Cities (6401.0)*
- *Price Index of Materials Used In House Building, Six State Capital Cities and Canberra (6408.0)*
- *House Price Index (6416.0)*
- *Building Approvals, Western Australia (8731.5)*
- *Building Activity, Western Australia (8752.5)*

Current publications produced by the ABS are listed in the *Catalogue of Publications and Products (1101.0)*. The ABS also issues, twice weekly, a *Publications Advice (1105.0)* which lists publications to be released in the next few days. The Catalogue and Publications Advice are available from ABS offices.

Unpublished Statistics

As well as the statistics included in this and related publications, the ABS may have other relevant unpublished data available. Inquiries should be made to Mike Carter on (09) 360 5128 or to any ABS office.

Symbols and Other Usages

- .. not applicable
- r revised



For more information...

The ABS publishes a wide range of information on Australia's economic and social conditions. Details are available in the *Catalogue of Publications and Products* is available from any of our Offices (see below for contact details).

Information Consultancy

Information tailored to special needs of clients or in-depth data investigations are provided by the ABS Information Consultancy Services in each of our Offices (available via the contacts below).

National Dial-a-Statistic Line

0055 86 400

(Steadycom P/L premium rate 25c/21.4 secs.)

This number gives 24 hours access, 365 days a year for a range of statistics.

Electronic Data Services

A growing range of our data is available on electronic media. Our Telestats service delivers major economic publications ready to download into your computer on the day of release. Our Ausstats service enables on-line access to a data base of thousands of up-to-date time series. Selected datasets are also available on diskette or CD-rom. For more details on our electronic services, contact Information Services in any of our Offices on the numbers below.

Bookshops and Subscriptions

There are now over 500 titles available from the ABS Bookshops in each of our Offices. The ABS also provides a subscription mailing service through which nominated publications are provided by mail at no additional cost. (Telephone Publications Subscription Service toll free on 008 02 0608 Australia wide).

Sales and Inquiries

Regional Offices

SYDNEY (02)
MELBOURNE (03)
BRISBANE (07)
PERTH (09)
ADELAIDE (08)
HOBART (002)
CANBERRA (06)
DARWIN (089)

Information Enquiries

268 4611
615 7000
222 6531
360 5140
237 7100
20 5800
207 0326
43 2111

Bookshop Sales

268 4620
615 7829
222 6350
360 5140
237 7582
20 5800
207 0326
43 2111

National Office

ACT (06)

252 6007



008 020 608

**Information Services, Exchange Plaza,
2 The Esplanade, Perth WA 6000.
or any ABS Office**

